



Modern living
crowned



About ALREHAB HEIGHTS

Alrehab Heights was not created overnight; it represents the natural evolution of more than three decades of deep-rooted experience in real estate and urban development. This journey is closely tied to the vision and leadership of its owner, Mr. Mohamed Abbas, whose hands-on approach has been instrumental in shaping the company's direction. Founded in 2004, Alrehab Heights has successfully delivered more than 1,000 residential units across West Cairo—an achievement that reflects a strong track record of credibility, reliability, and commitment to its clients.

The foundation of this expertise was built through years of practical involvement in the field, where theory was consistently translated into real-world applications. Over time, this experience expanded beyond conventional frameworks, reflecting a strong commitment to delivering tangible value through well-executed developments.





METAJ
SHEIKH ZAYED



More than a residential destination, METAJ is a statement of elevated living where innovation, design, and timeless elegance come together in perfect harmony. Crafted for those who seek a life ahead of its time.

Modern living
crowned



About METAj

METAj is a boutique residential community in Zayed City, thoughtfully crafted around a simple yet powerful vision: creating an exclusive living experience that prioritizes privacy, comfort, and a strong sense of belonging.

Strategically located in the heart of Zayed City, METAj enjoys a prime and vibrant location with seamless access to major roads, destinations, and everyday services. Surrounded by key amenities, educational institutions, retail destinations, and lifestyle attractions, the project offers residents the convenience of being close to everything while maintaining a peaceful and private living environment.





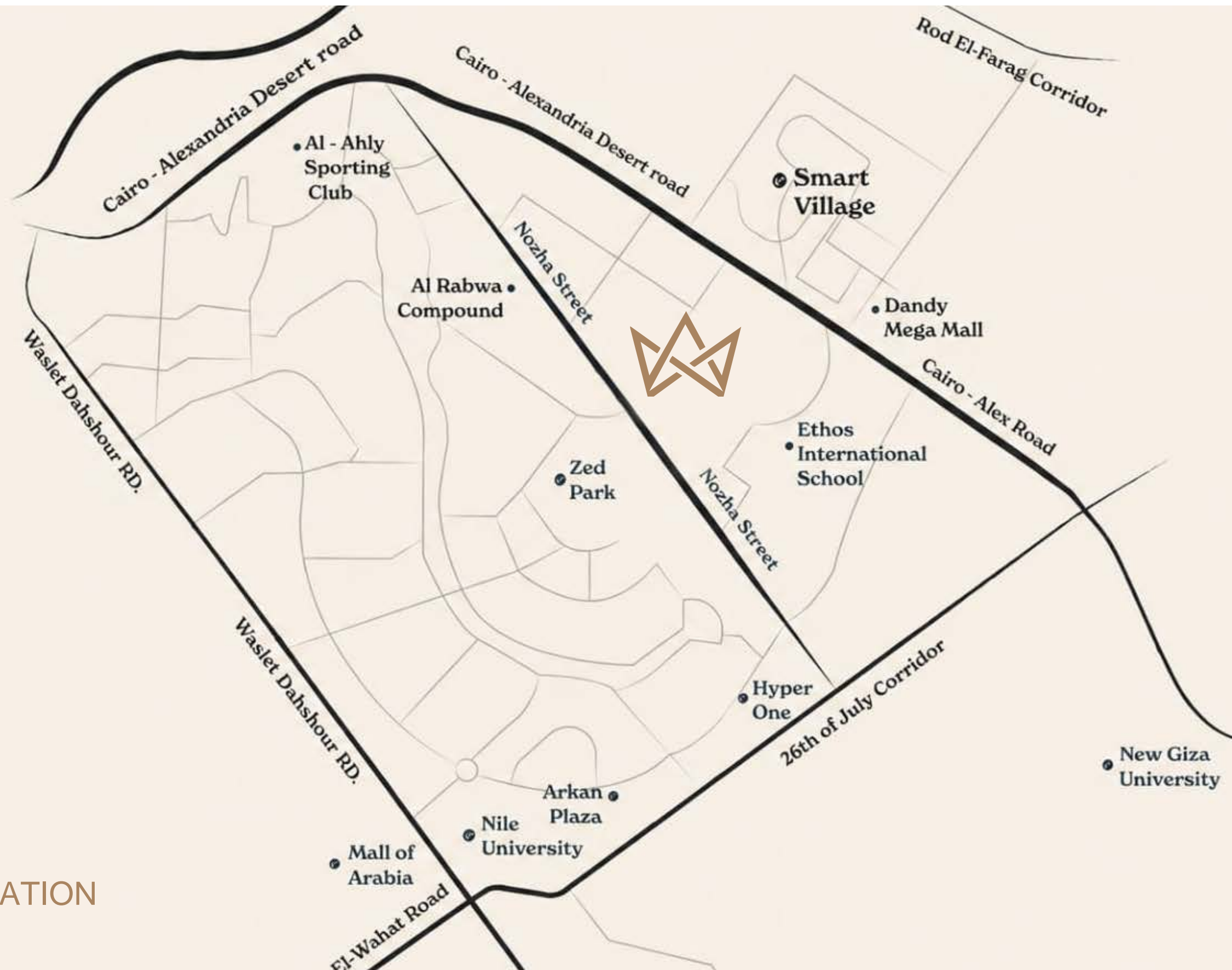
Complementing the residential experience, METAj integrates a selection of everyday conveniences and lifestyle amenities, ensuring residents enjoy seamless access to essential services while maintaining the calm and distinguished atmosphere that defines the community. More than a residential compound, METAj is a carefully curated living experience where every element is designed around the resident—offering a lifestyle that is elevated, personal, and uniquely rewarding.





LOCATION

LOCATION



Location designed
for your comfort

Located in one of Sheikh Zayed's most distinguished and vibrant districts, METAj offers an exceptional address that seamlessly connects residents to the city's nest destinations. Strategically positioned just minutes away from Hyper One, Al Ahly Club, El Nozha Street, the Cairo–Alexandria Desert Road, Dandy Mall, Smart Village, and Arkan Plaza, the project places every essential destination within effortless reach.

LOCATION



METAj is designed for those who seek a lifestyle that combines accessibility, privacy, and sophistication. Surrounded by premium retail, entertainment, educational, and healthcare facilities, residents enjoy the convenience of a fully integrated immediate access to Sheikh Zayed's most dynamic and exclusive residential community. and business hubs, METAj provides a peaceful retreat crafted around comfort, elegance, and everyday well-being. Its prime location not only enhances daily living but also reinforces the project's long-term investment value in one of the city's most sought-after destinations

1 min Nozha Street

1 min Zed Towers

2 min Cairo - Alex road

5 min Smart Village

3 min Dandy Mall

2 min Hyper One

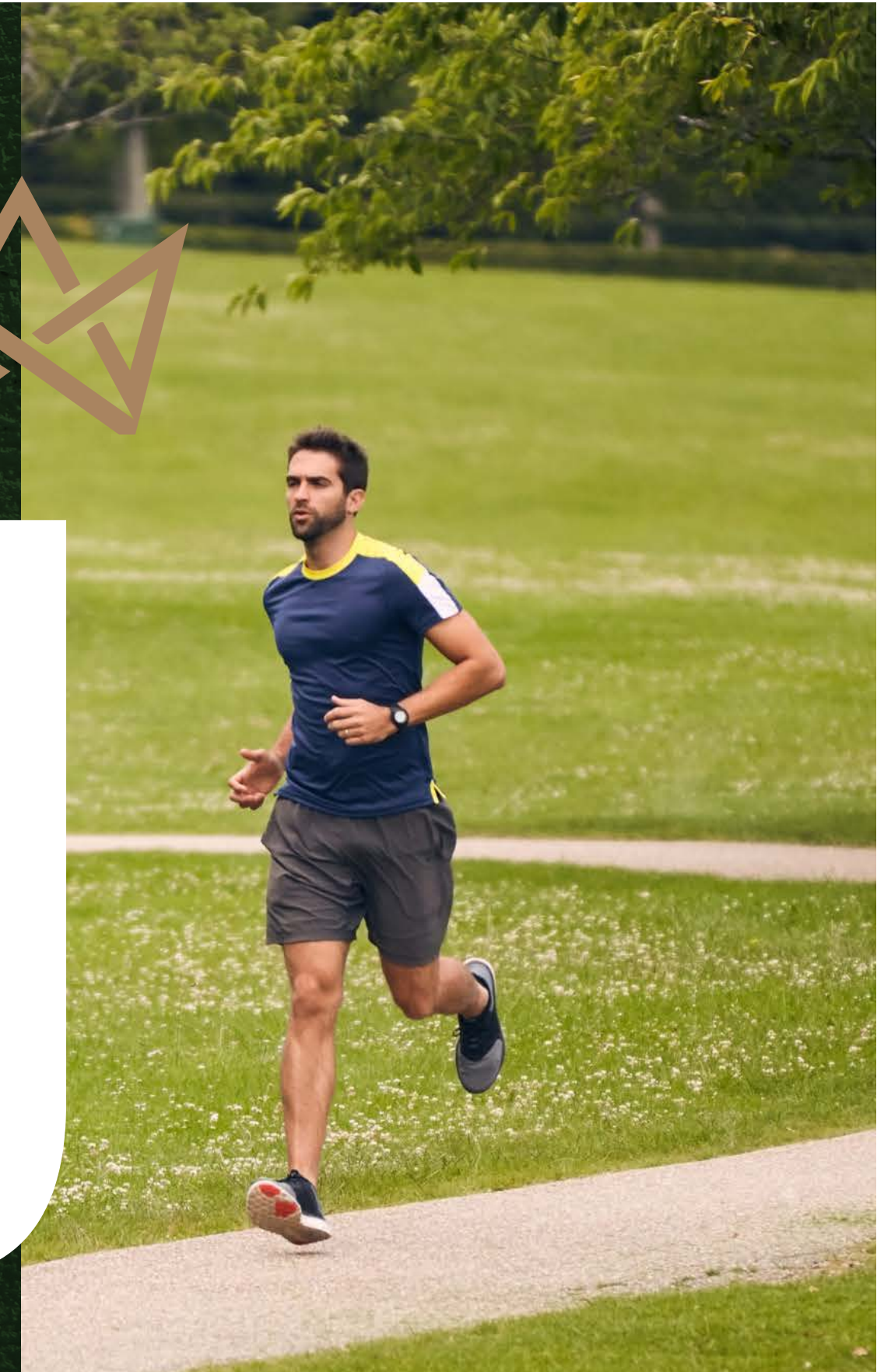
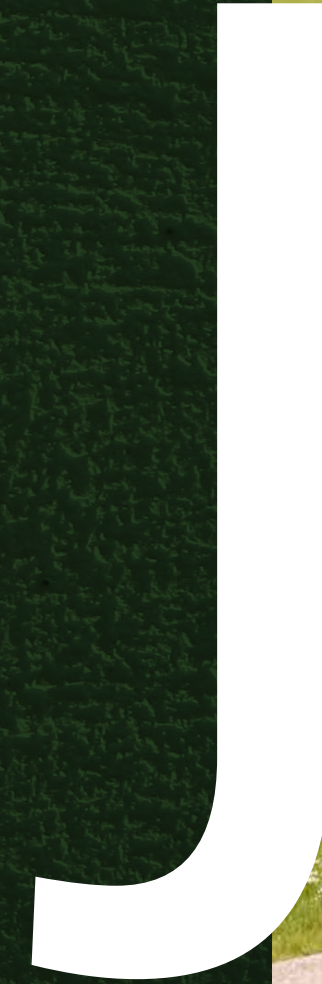
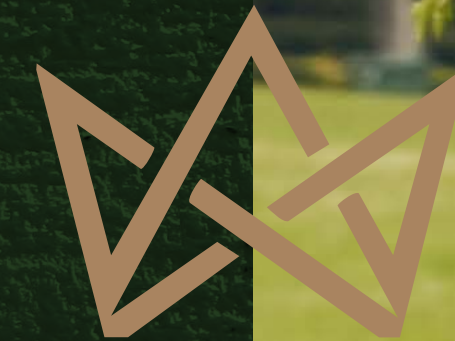
5 min Al Ahly Club



Facilities

METAj is crafted to offer a seamless lifestyle where every detail enhances the resident experience. From moments of relaxation and family enjoyment to everyday convenience and peace of mind, the community brings together all the elements of modern living within a secure and welcoming environment.

Community Features:



Swimming
Pool



Kids Area



Jogging Track



Mosque



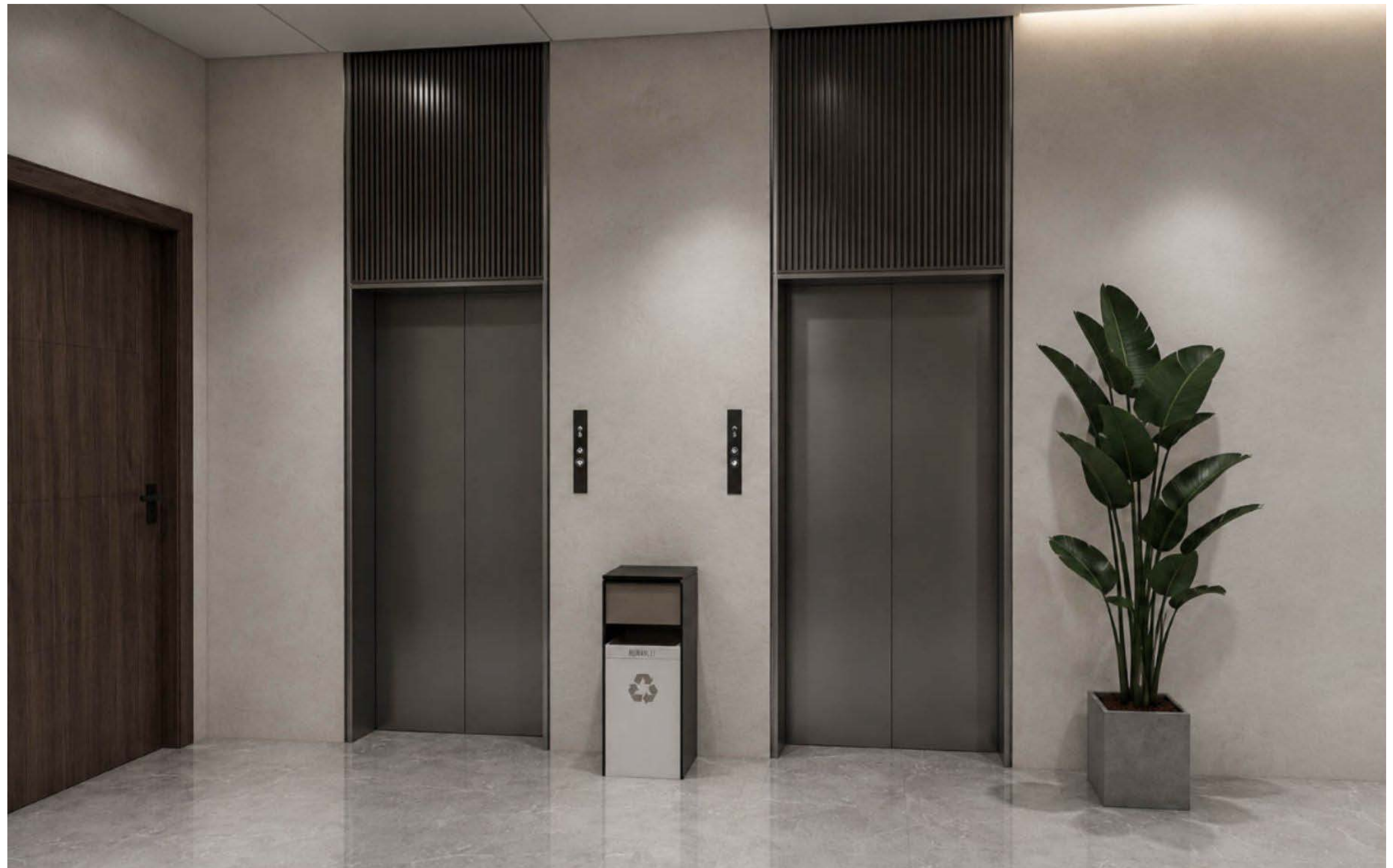
Commercial Area



24/7
Security
& CCTV
System



Modern Elevators



Dedicated
Parking





Master plan



Master
plan



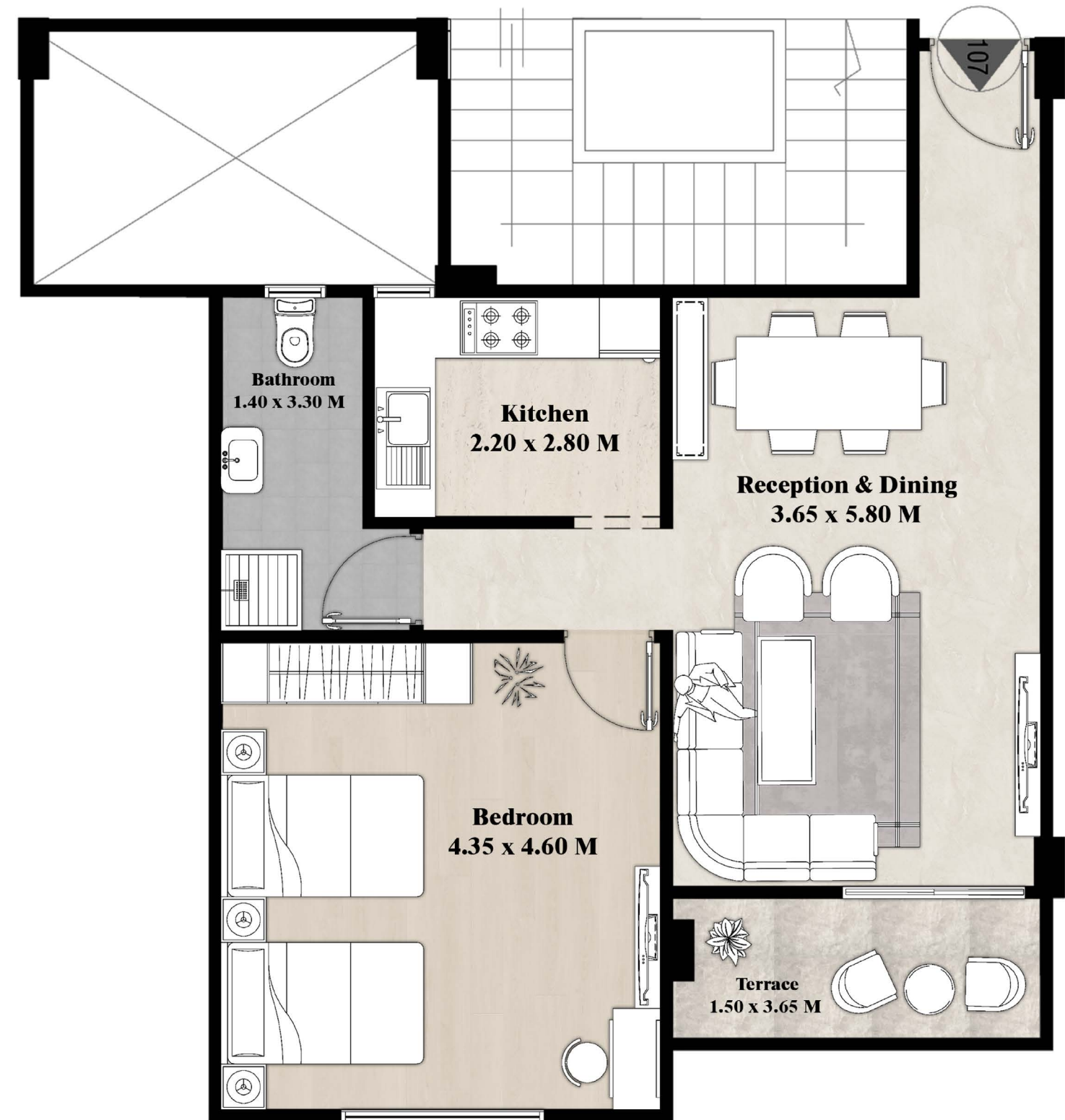
Typical Floor

UNIT : C34

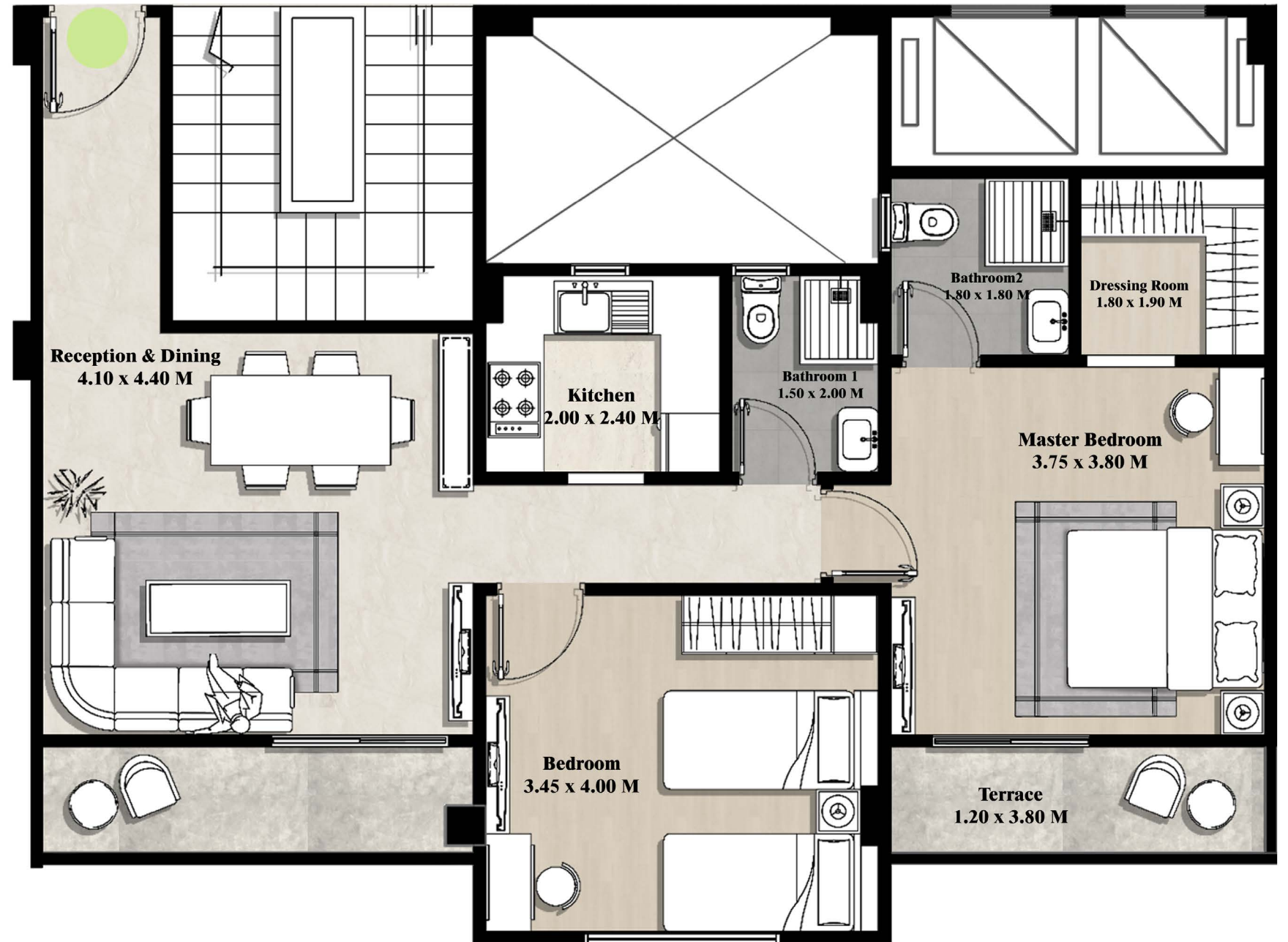
Area : 93 M

TYPICAL FLOOR

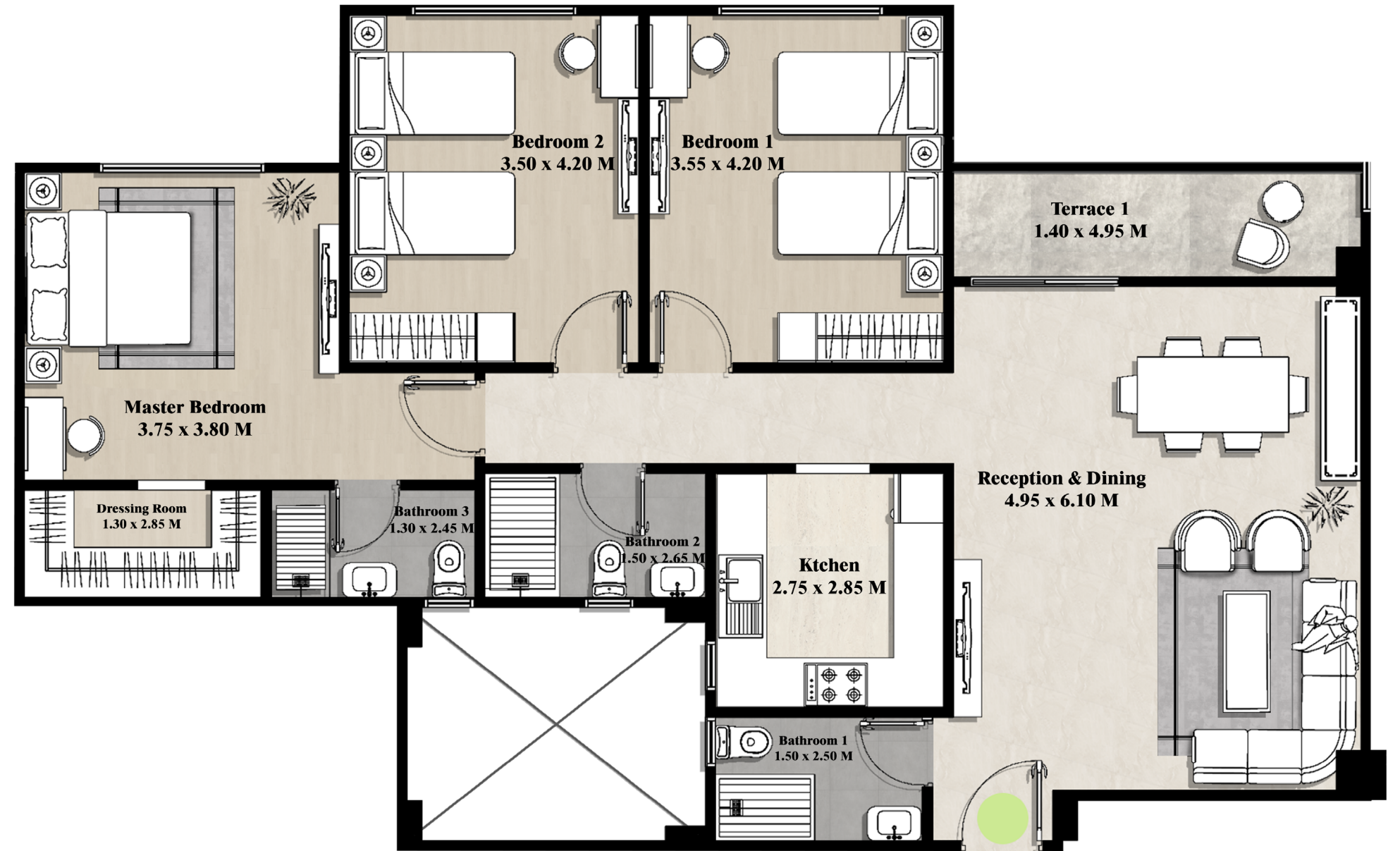
(1 BEDROOM)



TYPICAL FLOOR
(2 BEDROOM)

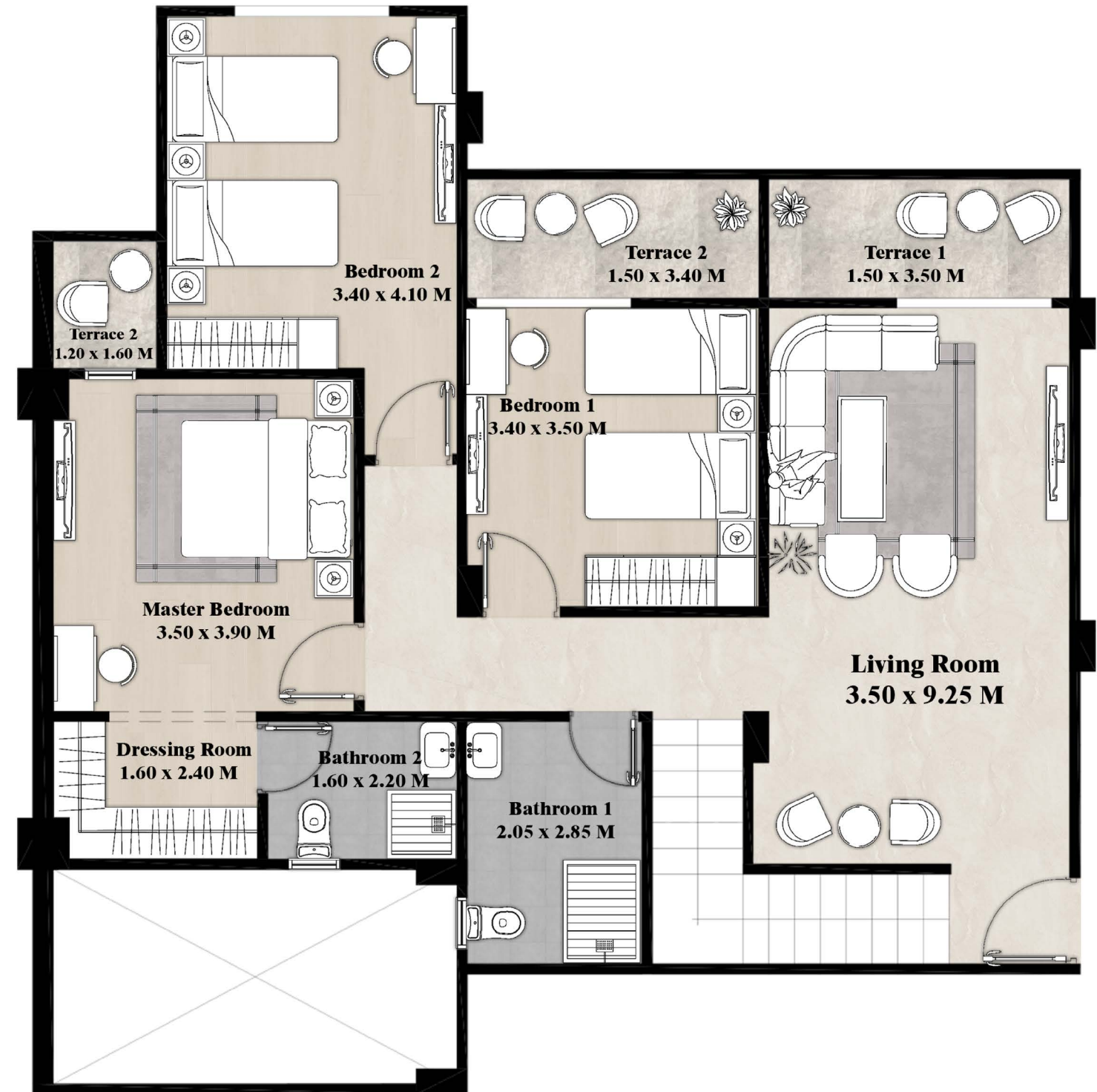


TYPICAL FLOOR
(3 BEDROOM)



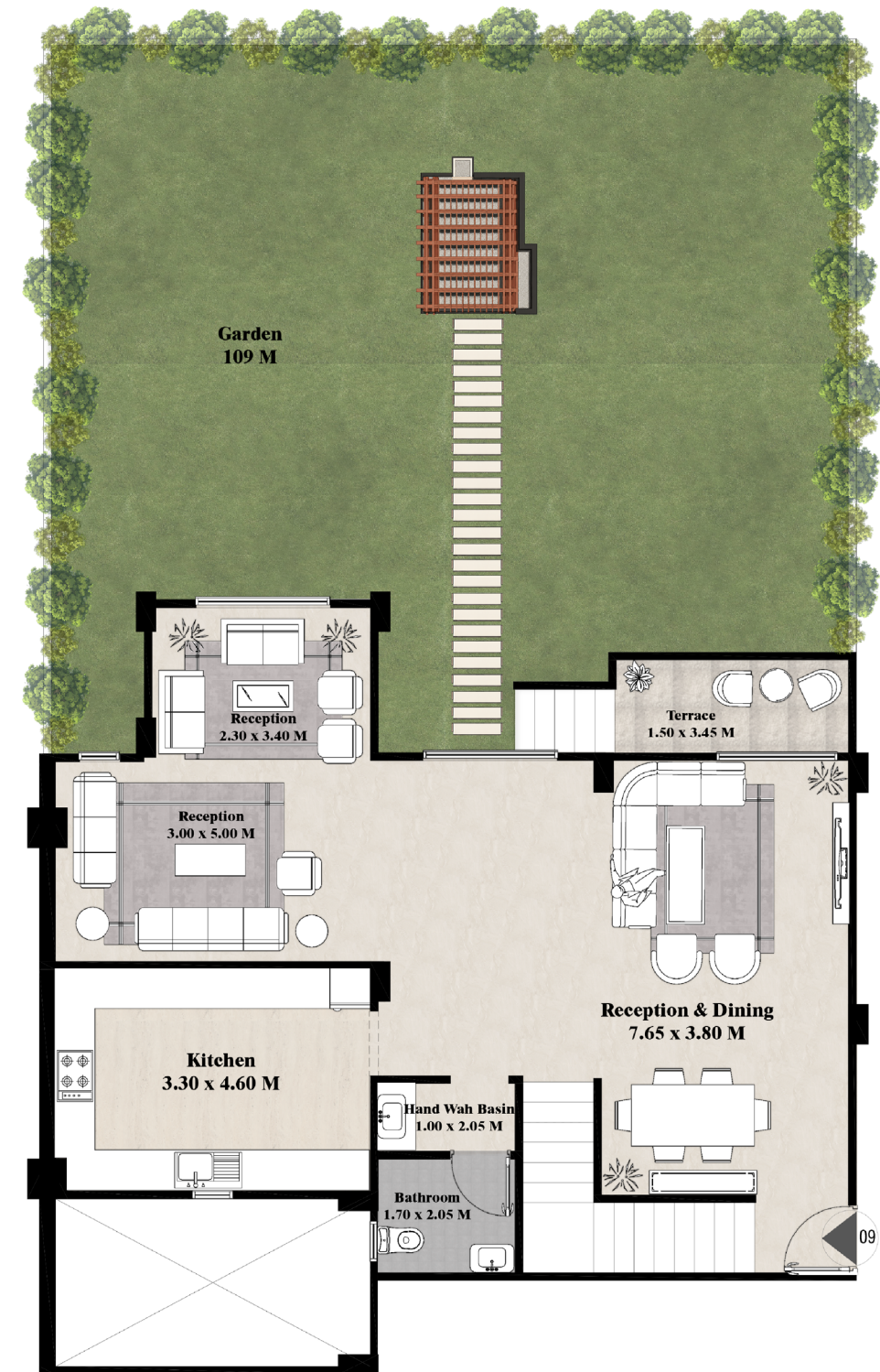
FIRST FLOOR

(DUPLEX)



GROUND FLOOR

(DUPLEX)





Modern living
crowned